

SC-2 Autosampler with FAST & BASE options for the Elan ICP-MS

The combination of the SC-2 autosampler with the FAST & BASE options provides an optimised sample changer for the Elan ICP-MS.

The SC-2 is an ultraclean autosampler which virtually eliminates sample cross contamination.

The FAST option speeds up sample analysis, allows memory prone elements to be included in analytical runs and dramatically reduces matrix effects on cones.

The BASE option positions the SC-2 at an ideal height for the Elan ICP-MS



SC-2 Autosampler with both FAST option and Stand for Perkin Elmer Elan ICP-MS

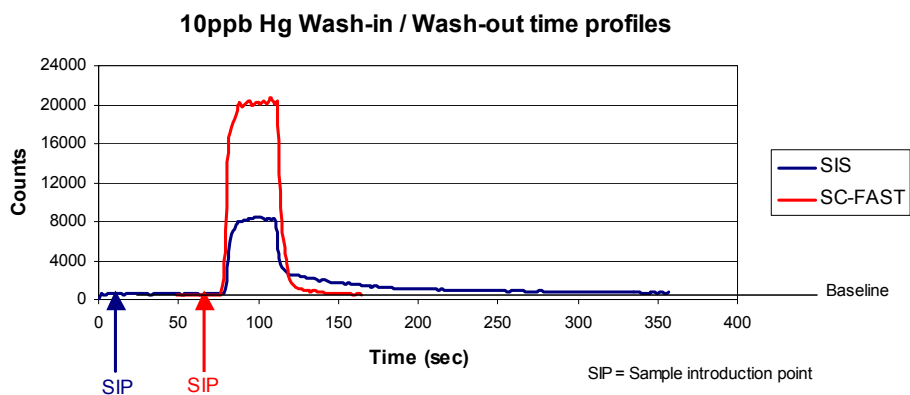
- Flexible sample changer capable of holding large (up to 250mL) and small (less than 1mL) samples in the same analytical run.
- Full control of probe retraction speed eliminates sample drops on the probe.
- Dual rinse station mimics best manual rinse procedures.
- Rapid analysis system removes the sample uptake and wash-out times from the analytical method.
- Sturdy stand, locks the SC-2 into position with shelving for storage
- Small footprint, takes up minimal lab space

Elemental Scientific Inc.
2440 Cuming St.
Omaha, NE 68131 USA
www.elementalscientific.com

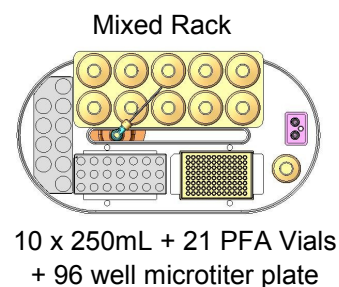
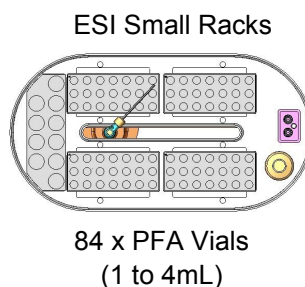
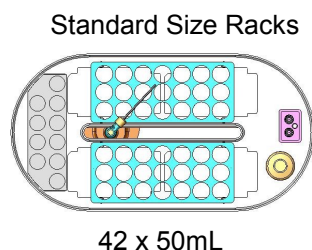
Phone: 402.991.7800
Fax: 402.991.7799
Email: esi@icpms.com



- No carry over
- Rapid wash-out <30sec compared to over 250sec with standard introduction systems for Hg
- Gravity fed rinse removes peristaltic pump contamination of rinse station



Multiple Rack Configurations with complete flexibility



Options



SC-2 autosampler with clean enclosure attached

SC-2 Clean Enclosure:

- Protects samples from airborne contamination
- Clear acrylic and polycarbonate construction provides sturdy protection to the SC-2
- Covers only the sample platform, saving space.
- Large door opening for easy access to the sample racks

Rinse options:

- Peristaltic pump under SC control allowing for optimum rinsing
- Pressurized cleaning system, giving controlled flow while maintaining the lowest possible rinse contamination

Elemental Scientific Inc.
2440 Cuming St.
Omaha, NE 68131 USA

Phone: 402.991.7800
Fax: 402.991.7799
Email: esi@icpms.com