

SC-E2 CLEAN ENCLOSURE

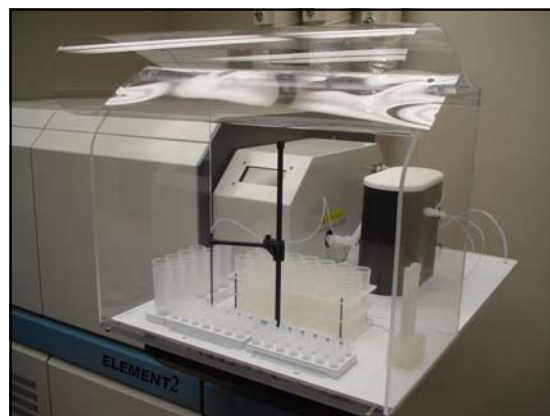
The Clean Enclosure has been developed for the SC-E2 integrated autosampler for the ELEMENT2 ICP-MS. This enclosure helps to maintain sample integrity while samples await analysis.

- ✓ Protects samples from airborne contamination.
- ✓ Clear acrylic construction, provides sturdy protection to the SC-E2.
- ✓ Covers only the sample platform
- ✓ Large door opening for unobstructed access to the sample racks.
- ✓ Clean Enclosure door easily opens and tucks away closed for rapid access to samples.
- ✓ Moves with ELEMENT2 door for simple cone maintenance.

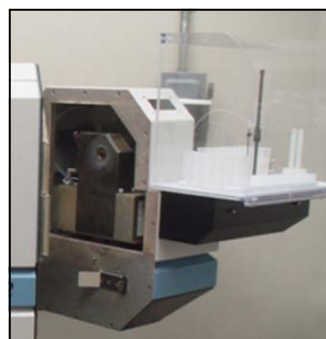
P/N ES-8199-1307
SC-E2 Enclosure



SC-E2 autosampler with clean enclosure attached



Enclosure door easily opens for unobstructed access to samples



SC-E2 autosampler and enclosure open with Element door for simple cone maintenance